

# Ideal Workstation® 3S + DryDock™ 12

IWS-3-S-DD-12-S-BA



Natural Golden Bamboo

IWS-3-S-DD-12-S-GT



Graphite Wood Composite

IWS-3-S-DD-12-S-WH



Designer White Resin\*

IWS-3-S-DD-12-S-GR



Exclusive Gray Resin\*

## Specifications

Single bowl  
Users: 1  
Culinary Tools included: Five  
DryDock Tool included: One  
Galley Tap recommended: One  
Outside dimensions: 45 1/2" x 19 1/2" x 2 1/16"  
Countertop cutout: 44 1/2" x 18"  
Minimum cabinet size: 48" or 120cm  
**Minimum clearance required for DryDock below countertop: 2"**  
DryDock location: Drain side (S)

## Basin (KSO-3-S-DS-12-S-SS)

16GA 316L stainless steel indoor/outdoor  
SilentArmor™ sound reduction technology  
Angel finish  
Two tier design  
Star™ groove pattern  
Reversible side drain  
Drain cover included  
Limited Lifetime Warranty  
Made in the USA  
ASME A112.19.3/CSA B45.4 certified

† The Upper Deck requires a 1/4" clearance below the surface of the countertop. If the countertop thickness is 2cm or less, Bamboo Upper Deck sections will not have the needed clearance to function above the Upper Tier Culinary Tools.  
Please refer to Culinary Kit Finish descriptions for planning.  
Custom options are available for countertops that are 1/2" or less in thickness.

## Culinary Tools included (CKT-12)



(1) Upper Deck Section†  
12" x 19"  
UD-12-I-xx



(1) Upper Tier Drying Rack  
12 1/4" x 18"  
DR-12-U-xx



(1) Upper Tier Cutting Board  
12 1/4" x 18"  
CB-12-U-xx



(2) Lower Tier Platforms  
12 1/4" x 17"  
P1-12-L-xx



(1) Stainless Steel Colander  
11" 7.2-qt  
C1-11-0-ST



(1) Stainless Steel Mixing Bowl  
11" 7.2-qt  
B1-11-0-ST



(1) Lower Tier Drying Rack  
12 1/4" x 17"  
DR-12-L-xx

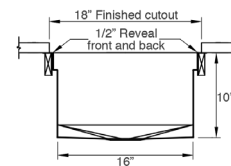
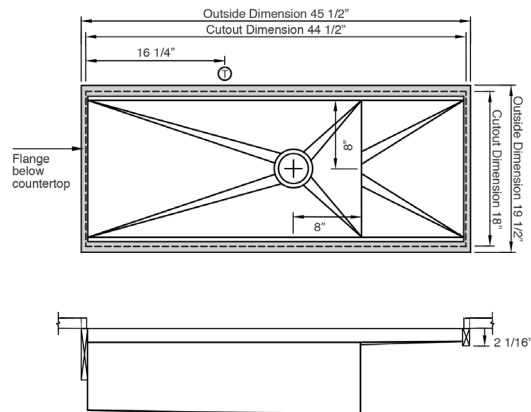
## DryDock Tool included (DR-12)

### Personalize Your IWS-3-S-DD-12-S

Add 7-12" length  
Add 1-6" length  
Add 18" DryDock  
Add 12" DryDock  
Apron front  
9" depth  
Center drain

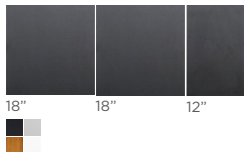
Galley Tap collection  
Optional Culinary Tools

\*Color coded labels available



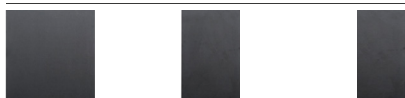
## Upper Deck™

Upper Deck cover set **UD-3-12-3P-GT/BA/GR/WH** Graphite, Bamboo, Gray or White Resin



(1) 12"  
Included in CKT

Upper Deck sections Graphite, Bamboo, Gray or White Resin



UD-18-I-GT/BA/GR/WH UD-12-I-GT/BA/GR/WH UD-09-I-GT/BA/GR/WH



## Recommended Basin Accessories

Bottom Grate set **BG-3-S-1-SS** Stainless Steel



31 1/2"

Manual Strainer Basket

**M-DRN-MSS** Angel Finish 304 Stainless Steel



Disposal Flange Strainer Basket

**G-DRN-MSS** Angel Finish 304 Stainless Steel



Auto Strainer Basket Angel Finish 304 Stainless Steel with Polished or Matte knob



A-DRN-MSS shown

A-DRN-PSS  
A-DRN-MSS