

# Floating Air® Series Ductless Split Systems



Control  
with App



Save big  
on energy



Voice command  
compatible



**FRIEDRICH**

1883



THE EXPERTS IN ROOM AIR CONDITIONING



# FLEXIBLE, EASY-TO-INSTALL ZONED COMFORT SOLUTIONS FROM THE LEADER IN ROOM AIR CONDITIONING

Whether you're heating and cooling a single room or multiple rooms, you won't find quieter, more energy-efficient solutions than Friedrich ductless split systems. Choose from sleek wall-mounted models, ceiling cassettes that mount flush with the ceiling, and ducted units that install out of sight.

## RESIDENTIAL APPLICATIONS



## COMMERCIAL APPLICATIONS



## WI-FI CONTROL\* ANYTIME, ANYWHERE.

\*Available on Premier and Pro wall-mounted models,  
and on Pro ceiling cassette models

# ALL OF THE ADVANTAGES OF DUCTLESS SPLIT SYSTEMS AND FRIEDRICH QUALITY

## Zero duct loss

According to the DOE, ducted systems lose an average of 25-40% in performance due to leaks, cracks or disconnections in ductwork.

No ductwork means that ductless systems do not experience duct loss, saving energy and money.



## No dirty air ducts\*

With a ductless system, there's no need to clean dirty air ducts that can harbor dust, germs and allergens that are eventually blown into your home or office.



## Zone cooling flexibility

Independently condition up to four separate zones using only a single outdoor unit. Cool or heat only the zones that are in use. Set individual comfort levels for each zone.



## Optimized airflow

4-way air swing quickly disperses cool or warm air to all four corners of the room to provide comfort throughout.

The 'Surge Air' feature moves air at an even higher speed for rapid cooling.



## Available built-in Wi-Fi

Easily adjust settings and power units off and on with your smartphone. The FriedrichGo™ app is easy to set up and use. Compatible with Amazon Alexa or Google Home. Wi-Fi available on Premier and Pro wall-mounted models, and on Pro ceiling cassette models.



## Friedrich Precision Inverter® delivers exceptional energy efficiency and smooth performance

Precision Inverter technology varies the compressor, the outdoor and the indoor fan speeds, eliminating constant compressor start-ups/shut-downs that traditional systems require to maintain the set temperature.

Each system can adjust capacity and cooling output to provide only the amount of cooling needed at a given time. The result is optimal comfort with low energy costs.

THE ADVANTAGES OF INVERTER DUCTLESS SPLIT SYSTEMS	
TRADITIONAL SYSTEM	INVERTER SYSTEM
At initial start up, a fixed capacity system slowly reaches the set temperature.	At initial start up, utilizes variable capacity to quickly reach the set temperature.
Complete shutdown once set temperature is achieved.	Reduces capacity as set temperature is achieved.
Temperature within the space rises until 2nd system start up.	Variable capacity maintains set temperature keeping space comfortable with reduced energy consumption.
System works at full capacity to again reach set temperature.	
System cycles on and off continually to maintain the set temperature.	

## Soft start technology

Friedrich soft start technology starts the compressor with significantly reduced amperage at start up, saving energy versus compressors utilizing locked rotor amperage (LRA).

A UNIQUE DESIGN MAKES FRIEDRICH—

# THE EASIEST DUCTLESS TO INSTALL, CLEAN & SERVICE

## FastPro®

EXCLUSIVELY ON  
FLOATING AIR PRO AND  
PREMIER SERIES

---

### The Problem

On typical ductless indoor units, accessing the indoor coils is extremely difficult and takes so much time that a thorough cleaning may be next to impossible.

Access to piping, wire terminal blocks, the fan and fan components is also a challenge.

---

### The Solution:

Friedrich FastPro was designed with the HVAC technician in mind. In a few easy steps that can be performed in minutes, the entire blower wheel assembly can be removed for easier, faster cleaning and service.

Also, you'll have easy access to the terminal blocks. FastPro will save you hours on the job site.



**40%**

FASTER\*  
TO INSTALL

**45%**

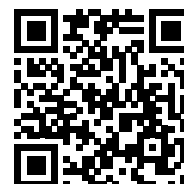
FASTER\*  
TO CLEAN

**50%**

FASTER\*  
TO SERVICE

---

Scan the code  
with your smartphone  
camera to learn more  
about **FastPro®**



\*Faster than similar installation, cleaning and service performed on standard ductless wall-mounted units.



# IN A FEW EASY STEPS

You can access the blower wheel assembly and slide it out for full access to the indoor coil



Back out electrical panel screws



Remove electrical access panels [2]



Lock the access panel



Unplug the wire harness



Remove screws then slide out the blower wheel assembly



Complete access to the coils for easy cleaning

**FastPro®**

UNIQUE FEATURES  
FOR FASTER  
INSTALLATION AND  
EASIER SERVICE

- Alignment arrows on the Friedrich wall bracket help you mark and drill the hole in the wall accurately, and with total confidence
- Easy-to-remove modular drain pan assembly
- Quick access to tangential blower and motor makes repairs easier
- Clear access to piping
- Built-in Wi-Fi models available
- Easy access to the wire terminal blocks
- Included kickstand tilts unit away from the wall providing ample space for your hands to work
- Onboard error codes help to ensure trouble-free operation
- Advanced corrosion protection
- Auto clean
- Washable, antimicrobial air filters

# THE CONTRACTOR'S CHOICE FOR DUCTLESS

Friedrich has three exceptional lines of ductless with unique features for easy installation. For contractors, this means less time on the job, and the opportunity to provide your customer with maintenance agreements on equipment that is cleaning and service friendly.

<p><b>FLOATING AIR® PREMIER</b></p> <p><b>SINGLE ZONE</b></p> <p>Wall-mounted</p>	<ul style="list-style-type: none"> <li>• Highest efficiencies</li> <li>• FastPro® design for fast installation, cleaning and service</li> <li>• Available with built-in Wi-Fi</li> <li>• Extended operating ranges, heating and cooling</li> </ul>	 <p><b>FastPro®</b></p>
<p><b>FLOATING AIR® PRO</b></p> <p><b>SINGLE ZONE AND MULTI ZONE</b></p> <p>Wall-mounted</p> <p>Ceiling Cassettes</p> <p>The Insider® Concealed Ducted Units</p>	<ul style="list-style-type: none"> <li>• Excellent efficiencies</li> <li>• FastPro® design for fast installation, cleaning and service</li> <li>• Available with built-in Wi-Fi</li> <li>• Extended operating ranges, heating and cooling</li> <li>• 115V wall-mounted heat pumps</li> </ul>	 <p><b>FastPro®</b></p>
<p><b>FLOATING AIR® SELECT</b></p> <p><b>SINGLE ZONE</b></p> <p>Wall-mounted</p>	<ul style="list-style-type: none"> <li>• High efficiency</li> <li>• Moderate pricing</li> <li>• Exceptional value</li> <li>• 115V wall-mounted heat pumps</li> </ul>	

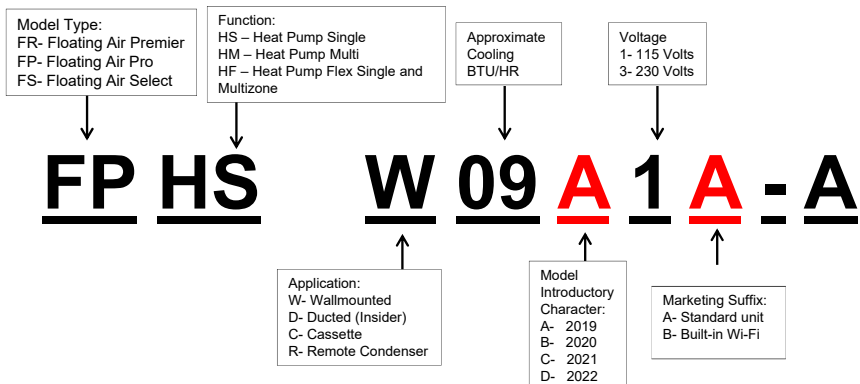
# FEATURE COMPARISON

A feature-by-feature comparison to help you select the best ductless system for your application.

SYSTEM TYPE	WALL-MOUNTED				CASSETTE		CONCEALED DUCTED	
Zones	SINGLE ZONE			MULTI ZONE	SINGLE ZONE	MULTI ZONE	SINGLE ZONE	MULTI ZONE
<b>Floating Air® Series</b>	Premier	Pro	Select	Pro	Pro	Pro	Pro The Insider™	Pro The Insider™
Installation	Wall	Wall	Wall	Wall	Ceiling	Ceiling	Concealed	Concealed
FastPro® Design	✓	✓	—	✓	—	—	—	—
Heat pump	✓	✓	✓	✓	✓	✓	✓	✓
115 volt models	—	✓	✓	—	—	—	—	—
SEER	Up to 28.0	Up to 23.3	Up to 18.0	Up to 22.0	Up to 19.0	Up to 22.0	Up to 17.6	Up to 21.0
Low ambient cooling operation	0° F	5° F	0° F	5° F	5° F	14° F	5° F	-4° F
Low ambient heating operation	-13° F	-4° F*	-4° F**	-13° F	-4° F	-13° F	-4° F	-13° F
Inverter driven compressor	✓	✓	✓	✓	✓	✓	✓	✓
Built-in Wi-Fi models, FriedrichGo™ app	✓	✓	—	✓	✓	✓	—	—
Google Home/Amazon Alexa compatible	✓	✓	—	✓	✓	✓	—	—
Auto changeover	✓	✓	✓	—	✓	—	✓	—
24- Hr. Programmable timer	✓	✓	✓	✓	✓	✓	✓	✓
Remote control	✓	✓	✓	✓	✓	✓	—	—
Wall controller option	✓	✓	—	✓	✓	✓	Included	Included
7-Day Programmability	—	—	—	—	—	—	✓	✓
(with wall control)	✓	✓	—	✓	✓	✓	✓	✓
Auto restart	✓	✓	✓	✓	✓	✓	✓	✓
Surge cool/heat	✓	✓	✓	✓	✓	✓	✓	✓
Dry mode	✓	✓	✓	✓	✓	✓	✓	✓
Auto Clean	✓	✓	✓	✓	✓	✓	✓	✓
Advanced Corrosion Protection	✓	✓	✓	✓	✓	✓	✓	✓
4-way auto swing	✓	✓	✓	✓	✓	✓	—	—
Washable, antimicrobial air filters	✓	✓	✓	✓	✓	✓	✓	✓

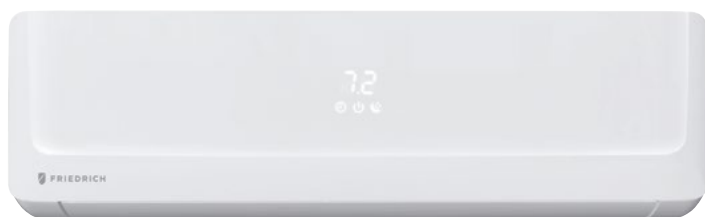
\*FastPro not available on FPHSW36A3A. \*\* [9K/12K/18K -4°F] [18K/24K -13°F]

## MODEL IDENTIFICATION GUIDE



## SINGLE ZONE • WALL-MOUNTED HEAT PUMPS

Top cooling and heating performance in extreme climates.  
28.0 SEER - our highest efficiencies ever!



### Wi-Fi available on select models for control anytime, anywhere

- Easy to use FriedrichGo™ app
- Control with smartphone
- Compatible with Amazon Alexa and Google Home



WIRELESS REMOTE  
WITH THE ABILITY  
TO CHANGE TO A  
COOL-ONLY REMOTE



### Features for comfort and convenience

- Create customizable, 7-day schedules
- Precision Inverter® technology (variable speed compressor)
- Fast Pro® design for the fastest access for maintenance of any wall-mounted ductless system
- Soft start compressor
- BLDC motor
- Our highest efficiencies for the lowest operating cost
- DiamonBlue Advanced Corrosion Protection®
- Auto Clean indoor coil
- Cooling/Heating/Fan/Auto mode
- Surge Cool/Heat
- Natural air flow
- Ultra quiet operation
- Sleep mode
- Auto restart
- Auto changeover
- 24-hour on/off timer
- ENERGY STAR® qualified model
- Hidden display (only visible during operation)

### Operates in extreme conditions

- Low ambient operation down to 0°F (Cooling mode)
- Low ambient operation down to -13°F (Heating mode)
- Low temperature compressor start-up protection





## PREMIER SERIES SPECIFICATIONS

PERFORMANCE RATINGS		Single Zone Wall-Mounted - Heat Pumps	
		9k	12k
SYSTEM MODEL NO.		FRHW093 FRHW093A <i>Wi-Fi</i>	FRHW123 FRHW123A <i>Wi-Fi</i>
INDOOR MODELS		FRHSW09A3A FRHSW09A3B <i>Wi-Fi</i>	FRHSW12A3A FRHSW12A3B <i>Wi-Fi</i>
OUTDOOR MODEL		FRHSR09A3A	FRHSR12A3A
SPECIFICATIONS			
CAPACITY COOLING (RATED)	Btu	9000	12000
CAPACITY COOLING (MIN-MAX)	Btu	3600-10000	4000-13500
CAPACITY HEATING @47°F (RATED)	Btu	10500	13000
CAPACITY HEATING @17°F (RATED)	Btu	6500	8000
CAPACITY HEATING (MIN-MAX)	Btu	3600-10500	4000-14000
SENSIBLE HEAT RATIO		76%	77%
HSPF		12.5	12.0
SEER		28.0	25.0
EER		16.1	15.4
ENERGY STAR		YES	YES
MOISTURE REMOVAL	Pts/h	1.9	2.5
AIRFLOW (QUIET, LOW, MED, HIGH)	CFM	416/384/355/279	598/536/446/345
SOUND RATING - INDOOR	dB-A	39/34/31	45/41/39
SOUND RATING - OUTDOOR	dB-A	55	55
OPERATING RANGE (COOLING)	°F	0°-115°	0°-115°
OPERATING RANGE (HEATING)	°F	-13°-75°	-13°-75°
EST. YEARLY OPERATING COST	\$	50	70
ELECTRICAL DATA			
POWER SOURCE	V-Hz-Phase	230/208-60-1	230/208-60-1
MINIMUM AMPACITY	A	10A	12A
COOLING WATTS	W	559	779
COOLING AMPS		2.3	4.6
HEATING WATTS	W	905	856
HEATING AMPS		3.4	4.8
MAX. TD FUSE/BREAKER	A	15A	15A
POWER AND COMMUNICATION CABLE	No. x AWG	4 x 14AWG	4 x 14AWG
REFRIGERATION SYSTEM			
REFRIGERANT		R410a	R410a
COMPRESSOR TYPE		Rotary	Rotary
CONNECTIONS		Flare	Flare
LIQUID LINE O.D.	in	1/4	1/4
SUCTION LINE O.D.	in	3/8	3/8
FACTORY PRECHARGE	ft	25	25
REFRIGERANT CHARGE	oz	38.8	45.9
MIN./MAX. LINE LENGTH	ft	10-66	10-66
MAX. HEIGHT DIFFERENCE	ft	33	33
DIMENSIONS & WEIGHT			
INDOOR UNIT			
W X H X D	in	33 7/8 x 11 1/8 x 8 1/2	38 1/8 x 13 1/8 x 10
NET WEIGHT	lbs	22	28.5
SHIPPING WEIGHT	lbs	26.5	34
OUTDOOR UNIT			
W X H X D	in	31 7/8 x 23 x 11	31 7/8 x 23 x 11
NET WEIGHT	lbs	75	84
SHIPPING WEIGHT	lbs	81.5	92.5
TOTAL NET WEIGHT	lbs	97	112.5
TOTAL SHIPPING WEIGHT	lbs	108	126.5

Your operating costs will depend on your utility rates and use.

The estimated operating cost is based on a electricity cost of \$.12 per kWh.

For more information, visit [www.ftc.gov/energy](http://www.ftc.gov/energy).

Due to continuing research in new energy-saving technology, specifications are subject to change without notice.



## SINGLE ZONE • WALL-MOUNTED HEAT PUMPS

The contractor's line with extensive features to make installation and service faster and easier. Exceptional efficiency and dependable performance.



### Wi-Fi available on select models for control anytime, anywhere

- Easy to use FriedrichGo™ app
- Control with smartphone
- Compatible with Amazon Alexa and Google Home



WIRELESS REMOTE WITH THE ABILITY TO CHANGE TO A COOL-ONLY REMOTE



### Features for comfort and convenience

- Create customizable, 7-day schedules
- Precision Inverter® technology (variable speed compressor)
- Fast Pro® design for the fastest access for maintenance of any wall-mounted ductless system
- Soft start compressor
- BLDC motor
- Auto Clean indoor coil
- Cooling/Heating/Fan/Auto mode
- LCD remote
- Surge Cool/Heat
- Tangential fan for optimum air flow
- Ultra quiet operation
- Sleep mode
- Auto restart
- Auto changeover
- 24-hour on/off timer
- ENERGY STAR® qualified models
- Easy-to-read temperature display

### Operates in extreme conditions

- Low ambient operation down to 5°F (Cooling mode)
- Low ambient operation down to -4°F (Heating mode)
- Low temperature compressor start-up protection



## PRO SERIES SPECIFICATIONS

PERFORMANCE RATINGS		115 volt models		230/208 volt models	
SYSTEM MODEL NO.		FPHW091 FPHW09A <i>Wi-Fi</i>	FPHW121 FPHW12A <i>Wi-Fi</i>	FPHW093 FPHW093A <i>Wi-Fi</i>	FPHW123 FPHW123A <i>Wi-Fi</i>
INDOOR MODEL		FPHSW09A1A FPHSW09A1B <i>Wi-Fi</i>	FPHSW12A1A FPHSW12A1B <i>Wi-Fi</i>	FPHFW09A3A FPHFW09A3B <i>Wi-Fi</i>	FPHFW12A3A FPHFW12A3B <i>Wi-Fi</i>
OUTDOOR MODEL		FPHSR09A1A	FPHSR12A1A	FPHSR09A3A	FPHSR12A3A
SPECIFICATIONS					
CAPACITY COOLING (RATED)	Btu	9000	12000	9000	12000
CAPACITY COOLING MIN - MAX	Btu	3600-10000	4000-13500	3600-10000	4000-13500
CAPACITY HEATING (RATED) @ 47°F	Btu	9500	13000	9500	13000
CAPACITY HEATING (RATED) @ 17°F	Btu	5000	7500	5000	7500
CAPACITY HEATING MIN - MAX	Btu	3600-10500	4000-14000	3600-10500	4000-14000
SENSIBLE HEAT RATIO		76%	77%	76%	77%
COP		3.56	3.46	3.88	3.42
HSPF		10.0	10.5	10.7	10.5
SEER		19.5	22.0	22.5	22.0
EER		12.8	13.0	13.7	13.0
ENERGY STAR		YES	YES	YES	YES
MOISTURE REMOVAL	Pts/h	1.9	2.5	1.9	2.5
AIRFLOW (HIGH/MED/LOW/QUIET)	CFM	424/382/323/247	424/382/323/247	424/382/323/247	424/382/323/247
SOUND RATING - INDOOR (HIGH/MED/LOW/QUIET)	dB-A	39/32/29/26	39/32/29/26	39/32/29/26	39/32/29/26
SOUND RATING - OUTDOOR	dB-A	53	53	53	53
OPERATING RANGE (HEATING)	°F	[-4° - 75°]	[-4° - 75°]	[-4° - 75°]	[-4° - 75°]
OPERATING RANGE (COOLING)	°F	[5° - 115°]	[5° - 115°]	[5° - 115°]	[5° - 115°]
EST. YEARLY OPERATING COST	U.S. \$	\$61	\$72	\$53	\$72
ELECTRICAL DATA					
POWER SOURCE	V-Hz-Phase	115-60-1	115-60-1	230/208-60-1	230/208-60-1
MIN. AMPACITY	A	13.5	16.5	10	10
COOLING WATTS	W	700	950	655	960
COOLING AMPS		6.3	8.3	2.9	4.3
HEATING WATTS	W	780	1100	720	1110
HEATING AMPS		7.0	9.7	3.1	5.0
MAX. TD FUSE/BREAKER	A	20	25	15	15
POWER AND COMMUNICATION CABLE	No. x AWG	4 x 14AWG	4 x 14AWG	4 x 14AWG	4 x 14AWG
REFRIGERATION SYSTEM					
REFRIGERANT		R410a	R410a	R410a	R410a
COMPRESSOR TYPE		Rotary	Rotary	Rotary	Rotary
CONNECTIONS		Flare	Flare	Flare	Flare
LIQUID LINE O.D.	in	1/4	1/4	1/4	1/4
SUCTION LINE O.D.	in	3/8	3/8	3/8	3/8
REFRIGERANT CHARGE	oz.	33.5	40.9	33.5	40.9
FACTORY PRECHARGE	ft.	25	25	25	25
MIN. / MAX. LINE LENGTH	ft	9.8-50	9.8-50	9.8-50	9.8-50
MAX. HEIGHT DIFFERENCE	ft	33	33	33	33
DIMENSIONS & WEIGHT					
INDOOR UNIT					
W x H x D	in	33 7/8 x 11 1/8 x 8 1/2		33 7/8 x 11 1/8 x 8 1/2	
NET WEIGHT	lbs	20	20	20	20
SHIPPING WEIGHT	lbs	24.25	24.25	24.25	24.25
OUTDOOR UNIT					
W x H x D	in	28 1/8 x 19 x 9 1/2	31 7/8 x 23 x 11	28 1/8 x 19 x 9 1/2	31 7/8 x 23 x 11
NET WEIGHT	lbs	65	78	59.5	72.5
SHIPPING WEIGHT	lbs	68	82.5	65	79
TOTAL NET WEIGHT	lbs	85	98	79.5	92.5
TOTAL SHIPPING WEIGHT	lbs	92.25	106.75	89.25	103.25

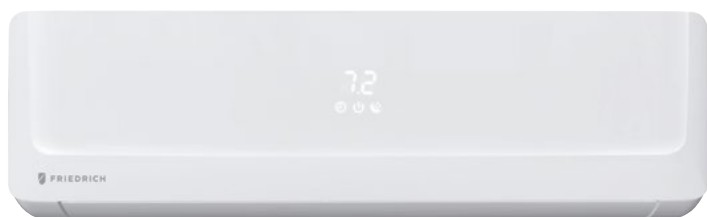
Your operating costs will depend on your utility rates and use. The estimated operating cost is based on a electricity cost of \$.12 per kWh. For more information, visit [www.ftc.gov/energy](http://www.ftc.gov/energy).

Due to continuing research in new energy-saving technology, specifications are subject to change without notice.

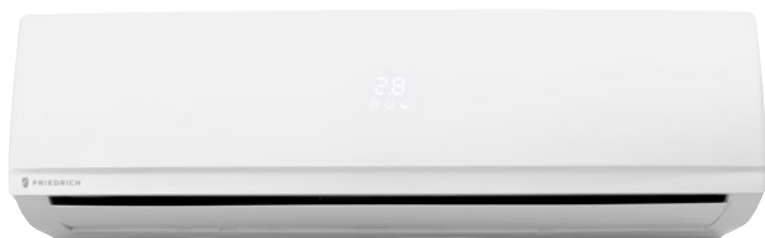


## SINGLE ZONE • WALL-MOUNTED HEAT PUMPS

The contractor's line with extensive features to make installation and service faster and easier. Exceptional efficiency and dependable performance.



FPHFW18A3A, FPHFW24A3A, FPHFW18A3B, FPHFW24A3B



FPHSW36A3A, FPHSW36A3B

### Wi-Fi available on select models for control anytime, anywhere

- Easy to use FriedrichGo™ app
- Control with smartphone
- Compatible with Amazon Alexa and Google Home



WIRELESS REMOTE WITH THE ABILITY TO CHANGE TO A COOL-ONLY REMOTE



### Features for comfort and convenience

- Create customizable, 7-day schedules
- Precision Inverter® technology (variable speed compressor)
- Fast Pro® design for the fastest access for maintenance of any wall-mounted ductless. Feature not on model FPHSW36A3A (B)
- Soft start compressor
- BLDC motor
- Auto Clean indoor coil
- Cooling/Heating/Fan/Auto mode
- LCD remote
- Surge Cool/Heat
- Tangential fan for optimum air flow
- Ultra quiet operation
- Sleep mode
- Auto restart
- Auto changeover
- 24-hour on/off timer
- ENERGY STAR® qualified model
- Easy-to-read temperature display

### Operates in extreme conditions

- Low ambient operation down to 5°F (Cooling mode)
- Low ambient operation down to -4°F (Heating mode)
- Low temperature compressor start-up protection



## PRO SERIES SPECIFICATIONS

PERFORMANCE RATINGS		230/208 volt models		
SYSTEM MODEL NO.		FPHW183 FPHW183A <i>Wi-Fi</i>	FPHW243 FPHW243A <i>Wi-Fi</i>	FPHW363 FPHW363A <i>Wi-Fi</i>
INDOOR MODEL		FPHFW18A3A FPHFW18A3B <i>Wi-Fi</i>	FPHFW24A3A FPHFW24A3B <i>Wi-Fi</i>	FPHSW36A3A FPHSW36A3B <i>Wi-Fi</i>
OUTDOOR MODEL		FPHSR18A3A	FPHSR24A3A	FPHSR36A3A
SPECIFICATIONS				
CAPACITY COOLING (RATED)	Btu	18000	23500	36000
CAPACITY COOLING MIN - MAX	Btu	6500-19500	8000-26500	12000-38000
CAPACITY HEATING (RATED) @ 47°F	Btu	19000	26000	36000
CAPACITY HEATING (RATED) @ 17°F	Btu	11600	14500	18700
CAPACITY HEATING MIN - MAX	Btu	6500-20000	8000-26500	12000-38000
SENSIBLE HEAT RATIO		80%	76%	79%
COP		3.40	3.05	3.05
HSPF		11.6	10.5	8.8
SEER		23.3	21.0	16.4
EER		13	12.5	8.6
ENERGY STAR		YES	YES	—
MOISTURE REMOVAL	Pts/h	3.2	5.1	6.8
AIRFLOW (HIGH/MED/LOW/QUIET)	CFM	618/565/482/382	735/665/559/441	1030/824/706/588
SOUND RATING - INDOOR (HIGH/MED/LOW/QUIET)	dB-A	45/41/37/34	47/42/36/33	50/45/40/38
SOUND RATING - OUTDOOR	dB-A	55	58	60
OPERATING RANGE (HEATING)	°F	-4° - 75°	-4° - 75°	-4° - 75°
OPERATING RANGE (COOLING)	°F	5° - 115°	5° - 115°	5° - 115°
EST. YEARLY OPERATING COST	U.S. \$	\$124	\$169	\$376
ELECTRICAL DATA				
POWER SOURCE	V-Hz-Phase	230/208-60-1	230/208-60-1	230/208-60-1
MIN. AMPACITY	A	15	20	30
COOLING WATTS	W	1385	1880	4186
COOLING AMPS		6.3	8.3	18.5
HEATING WATTS	W	1638	2500	3459
HEATING AMPS		7.2	11.1	16
MAX. TD FUSE/BREAKER	A	20	30	35
POWER AND COMMUNICATION CABLE	No.x AWG	4 x 14AWG	4 x 14AWG	4 x 14AWG
REFRIGERATION SYSTEM				
REFRIGERANT		R410a	R410a	R410a
COMPRESSOR TYPE		Rotary	Rotary	Rotary
CONNECTIONS		Flare	Flare	Flare
LIQUID LINE O.D.	in	1/4	3/8	3/8
SUCTION LINE O.D.	in	1/2	5/8	3/4
REFRIGERANT CHARGE	oz.	54.7	66.3	81.2
FACTORY PRECHARGE	ft.	25	25	25
MIN. / MAX. LINE LENGTH	ft	9.8-66	9.8-66	9.8-66
MAX. HEIGHT DIFFERENCE	ft	33	33	33
DIMENSIONS & WEIGHT				
INDOOR UNIT				
W x H x D	in	45 1/8 x 13 1/8 x 10		50 5/8 x 13 5/8 x 10 1/4
NET WEIGHT	lbs	33	33	40
SHIPPING WEIGHT	lbs	38.5	38.5	48
OUTDOOR UNIT				
W x H x D	in	33 7/8 x 25 1/2 x 12 1/8	34 7/8 x 31 1/4 x 14 3/8	34 7/8 x 31 1/4 x 14 3/8
NET WEIGHT	lbs	99	123.5	141
SHIPPING WEIGHT	lbs	108	141	152
TOTAL NET WEIGHT	lbs	132	156.5	181
TOTAL SHIPPING WEIGHT	lbs	146.5	179.5	200

Your operating costs will depend on your utility rates and use. The estimated operating cost is based on a electricity cost of \$ .12 per kWh. For more information, visit [www.ftc.gov/energy](http://www.ftc.gov/energy).

Due to continuing research in new energy-saving technology, specifications are subject to change without notice.





## SINGLE ZONE • CEILING CASSETTE HEAT PUMPS

Compact cassette units install in a drop ceiling and mount flush to the ceiling for a clean look and efficient installation.



### Wi-Fi available on select models for control anytime, anywhere

- Easy to use FriedrichGo™ app
- Control with smartphone
- Compatible with Amazon Alexa and Google Home



WIRELESS REMOTE WITH THE ABILITY TO CHANGE TO A COOL-ONLY REMOTE

### Features for comfort and convenience

- Create customizable, 7-day schedules
- 24-hour on/off timer
- Precision Inverter® technology (variable speed compressor)
- Soft start compressor
- Natural air flow
- 4-way cooling
- Surge Cool/Heat
- Cooling/Heating/Fan mode
- Dry mode
- Sleep mode
- Independent vane control
- 3 fan speeds
- Ultra-quiet turbo fan
- Evaporator frost control
- Auto restart
- Auto changeover
- DiamonGold Advanced Corrosion Protection™
- Clean, modern look
- Flexible installation
- ENERGY STAR® qualified models
- Precise air distribution

### Operates in extreme conditions

- Built-in low ambient, down to 5°F on 9k/12k/18k models, down to -4°F on 24k/36k models (Cooling mode)
- Low ambient operation down to -4°F (Heating mode)

**NOTE: Cassette grilles are sold separately.**



## PRO SERIES SPECIFICATIONS

PERFORMANCE RATINGS		Single Zone Cassette - Heat Pumps				
SYSTEM MODEL NO.		FPHC093 FPHC093A <i>Wi-Fi</i>	FPHC123 FPHC123A <i>Wi-Fi</i>	FPHC183 FPHC183A <i>Wi-Fi</i>	FPHC243 FPHC243A <i>Wi-Fi</i>	FPHC363A <i>Wi-Fi</i>
INDOOR MODEL		FPHFC09A3A FPHFC09A3B <i>Wi-Fi</i>	FPHFC12A3A FPHFC12A3B <i>Wi-Fi</i>	FPHFC18A3A FPHFC18A3B <i>Wi-Fi</i>	FPHFC24A3A FPHFC24A3B <i>Wi-Fi</i>	FPHSC36A3B <i>Wi-Fi</i>
OUTDOOR MODEL		FPHFR09A3A	FPHFR12A3A	FPHFR18A3A	FPHFR24A3A	FPHFR36A3A
SPECIFICATIONS						
CAPACITY COOLING (RATED)	Btu	9000	12000	18000	24000	36000
CAPACITY COOLING (MIN-MAX)	Btu	4850-11600	5800-13100	8000-19200	8600-25200	12600-36800
CAPACITY HEATING @47°F (RATED)	Btu	9000	12000	11942	24000	42600
CAPACITY HEATING @17°F (RATED)	Btu	5120	6800	7500	19600	27300
CAPACITY HEATING (MIN-MAX)	Btu	4340-12280	6000-14400	7000-21200	7600-28400	15000-42600
SENSIBLE HEAT RATIO		76%	77%	76%	76%	79%
COP (@47°F)	.	4.00	3.80	3.90	3.61	3.31
HSPF		10.00	10.00	10.00	10.00	10.50
SEER		18	19	19	19	19.5
EER		12.5	12.5	12.7	12.5	10.6
ENERGY STAR *		YES	YES	YES	YES	—
MOISTURE REMOVAL	Pts/h	2	3	5	5.1	7.61
AIRFLOW (LOW, MED, HIGH )	CFM	235/285/309	235/294/353	380/457/588	400/530/647	676/794/941
SOUND RATING - INDOOR H/M/L	dB(A)	40/33/28	35/32/29	38/35/33	43/39/36	49/43/39
SOUND RATING - OUTDOOR	dB(A)	52	54	68	54	61
OPERATING RANGE (COOLING)	°FDB	5-118	5-118	5-118	-4-118	-4-118
OPERATING RANGE (HEATING)	°FWB	-4-75	-4-75	-4-75	-4-75	-4-75
EST. YEARLY OPERATING COST	\$	53	72	124	169	376
ELECTRICAL DATA						
POWER SOURCE	V	230/208-60-1	230/208-60-1	230/208-60-1	230/208-60-1	230/208-60-1
MINIMUM AMPACITY	A	23	23	23	23	27
COOLING WATTS	W	720	960	1420	1920	3380
COOLING AMPS		3.6	4.3	6.3	8.6	14.6
HEATING AMPS		3.5	4.1	6.5	8.7	14.0
MAX. TD FUSE/BREAKER	A	20	30	30	30	50
POWER AND COMMUNICATION CABLE No. x AWG		4 x 14AWG	4 x 14AWG	4 x 14AWG	4 x 14AWG	4 x 14AWG
REFRIGERATION SYSTEM						
REFRIGERANT		R410a	R410a	R410a	R410a	R410a
COMPRESSOR TYPE		Rotary	Rotary	Rotary	Rotary	Rotary
CONNECTIONS		Flare	Flare	Flare	Flare	Flare
LIQUID LINE O.D.	in	1/4	1/4	1/4	3/8	3/8
SUCTION LINE O.D.	in	3/8	3/8	1/2	5/8	3/4
FACTORY PRECHARGE	ft	25	25	25	25	25
REFRIGERANT CHARGE	oz	33.5	45.9	56.5	75	111
MIN./MAX. LINE LENGTH	ft	10-82	10-82	10-98	25-164	25-164
MAX. HEIGHT DIFFERENCE	ft	33	49	49	98	98
DIMENSIONS & WEIGHT						
INDOOR UNIT						
W X H X D	in	22 1/2 x 8 1/2 x 22 1/2	22 1/2 x 8 1/2 x 22 1/2	33 x 14 1/2 x 33	33 x 14 1/2 x 33	33 x 16 1/2 x 33
NET WEIGHT	lbs	32	33	56	59.5	70.5
SHIPPING WEIGHT	lbs	38.5	39.7	73.9	79.5	90.4
INDOOR UNIT GRILLE** W X H X D	in	24-1/2 x 24-1/2 x 10	24-1/2 x 24-1/2 x 10	35-7/8 x 35-7/8 x 13 1/2	35-7/8 x 35-7/8 x 13 1/2	35-7/8 x 35-7/8 x 13 1/2
INDOOR UNIT GRILLE** NET WEIGHT	lbs	13.2	13.2	22.0	22.0	22.0
INDOOR GRILLE PART NUMBER		FPCG0912		FPCG182436		
OUTDOOR UNIT						
W X H X D	in	37 x 25 x 16 1/2	37 x 25 x 16 1/2	39 x 17 3/4 x 28 3/4	43 x 36 1/4 x 18 1/8	43 x 36 1/4 x 18 1/8
NET WEIGHT	lbs	75	75	108	155	192
SHIPPING WEIGHT	lbs	85	82	117	166	215
TOTAL NET WEIGHT	lbs	107	108	164	214.5	262.5
TOTAL SHIPPING WEIGHT	lbs	123.5	121	191	245.5	305.4

Your operating costs will depend on your utility rates and use. The estimated operating cost is based on a electricity cost of \$.12 per kWh. For more information, visit [www.ftc.gov/energy](http://www.ftc.gov/energy). \*System meets ENERGY STAR® published minimums. \*\*Models require grille. Sold separately.

Due to continuing research in new energy-saving technology, specifications are subject to change without notice.

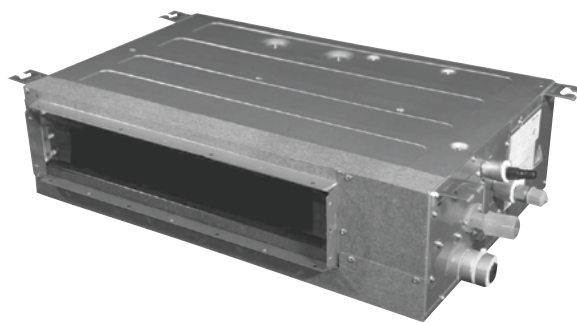


## SINGLE ZONE • THE INSIDER® CONCEALED DUCTED HEAT PUMPS

Indoor unit is installed in the ceiling or furr down, totally concealed, for unobtrusive installation.

### Features

- Precision Inverter® technology (variable speed compressor)
- Soft start compressor
- BLDC motor
- Cooling/Heating/Fan mode
- Dry mode
- 3 fan speeds
- Auto restart
- Auto changeover
- DiamonGold Advanced Corrosion Protection™
- Control lock function on controller
- External Static Pressure Range 0-.40



### Operates in extreme conditions

- Built-in low ambient, down to 5°F on 9k/12k/18k models, down to -4°F on 24k/36k models (Cooling mode)
- Low ambient operation down to -4°F (Heating mode)



## PRO SERIES SPECIFICATIONS

PERFORMANCE RATINGS		Single Zone - The Insider™ Concealed Ducted Heat Pumps				
SYSTEM MODEL NO.		FPHD093	FPHD123	FPHD183	FPHD243	FPHD363
INDOOR MODEL		FPHFD09A3A	FPHFD12A3A	FPHFD18A3A	FPHFD24A3A	FPHSD36A3A
OUTDOOR MODEL		FPHFR09A3A	FPHFR12A3A	FPHFR18A3A	FPHFR24A3A	FPHFR36A3A
SPECIFICATIONS						
CAPACITY COOLING (RATED)	Btu	9000	12000	18000	24000	36000
CAPACITY COOLING (MIN-MAX)	Btu	4850-11600	5800-13100	8000-19200	8600-25200	12600-36800
CAPACITY HEATING @47°F (RATED)	Btu	9000	12000	18000	24000	36000
CAPACITY HEATING @17°F (RATED)	Btu	6200	8200	14700	19600	22000
CAPACITY HEATING (MIN-MAX)	Btu	4340-12280	6000-14400	7000-21200	7600-28400	15000-42600
SENSIBLE HEAT RATIO		76%	76%	76%	76%	76%
SEER		17	19	19	18	18
EER		12	11	12.2	12.5	10.9
COP (@47°F)		3.2	3.2	3.4	3.6	3
HSPF		10.00	10.00	10.00	10.00	9.50
ENERGY STAR		—	—	—	—	—
MOISTURE REMOVAL	Pts/h	2	3	5	5.1	7.61
AIRFLOW (LOW, MED, HIGH )	CFM	235/285/309	235/285/338	370/440/529	501/574/647	618/735/853
SOUND RATING - INDOOR H/M/L	dB(A)	29/27/26	36/33/30	38/35/33	38/36/34	49/43/39
SOUND RATING - OUTDOOR	dB(A)	52	54	68	54	61
OPERATING RANGE (COOLING)	°F	5-118	5-118	5-118	-4-118	-4-118
OPERATING RANGE (HEATING)	°F	-4-75	-4-75	-4-75	-4-75	-4-75
EST. YEARLY OPERATING COST	\$	53	72	124	169	376
ELECTRICAL DATA						
POWER SOURCE		230/208-60-1	230/208-60-1	230/208-60-1	230/208-60-1	230/208-60-1
MINIMUM AMPACITY	A	23.0	23.0	23.0	23.0	4.6
COOLING WATTS	W	750	1091	1610	2200	3300
COOLING AMPS		3.7	4.8	7.0	8.6	14.4
HEATING AMPS		4.1	4.8	7.3	8.7	15.2
MAX. TD FUSE/BREAKER	A	20	30	30	30	50
POWER AND COMMUNICATION CABLE	No. x AWG	4 x 14AWG	4 x 14AWG	4 x 14AWG	4 x 14AWG	4 x 14AWG
REFRIGERATION SYSTEM						
REFRIGERANT		R410a	R410a	R410a	R410a	R410a
COMPRESSOR TYPE		Rotary	Rotary	Rotary	Rotary	Rotary
CONNECTIONS		Flare	Flare	Flare	Flare	Flare
LIQUID LINE O.D.	in	1/4	1/4	1/4	3/8	3/8
SUCTION LINE O.D.	in	3/8	3/8	1/2	5/8	3/4
FACTORY PRECHARGE	ft	25	25	25	25	25
REFRIGERANT CHARGE	oz	33.5	45.9	56.5	75.3	111
MIN./MAX. LINE LENGTH	ft	10-82	10-82	10-98	25-164	25-164
MAX. HEIGHT DIFFERENCE	ft	33	49	49	98	98
DIMENSIONS & WEIGHT						
INDOOR UNIT						
W X H X D	in	35 7/8 x 7 1/2 x 17 5/8	35 7/8 x 7 1/2 x 17 5/8	48 7/16 x 7 1/2 x 17 5/8	39 x 10 5/8 x 30	55 x 8 3/4 x 33
NET WEIGHT	lbs	39.7	39.7	49.6	70.5	112.5
SHIPPING WEIGHT	lbs	46.3	47.4	56.2	81.6	132.4
OUTDOOR UNIT						
W X H X D	in	37 x 25 x 16 1/2	37 x 25 x 16 1/2	39 x 17 3/4 x 28 3/4	43 x 36 1/4 x 18 1/8	43 x 36 1/4 x 18 1/8
NET WEIGHT	lbs	75	75	108	155	192
SHIPPING WEIGHT	lbs	85	82	117	166	215
TOTAL NET WEIGHT	lbs	107	108	108	214.5	262.5
TOTAL SHIPPING WEIGHT	lbs	123.5	121	158	245.5	305.4

Your operating costs will depend on your utility rates and use. The estimated operating cost is based on a electricity cost of \$.12 per kWh.

For more information, visit [www.ftc.gov/energy](http://www.ftc.gov/energy).

Due to continuing research in new energy-saving technology, specifications are subject to change without notice.



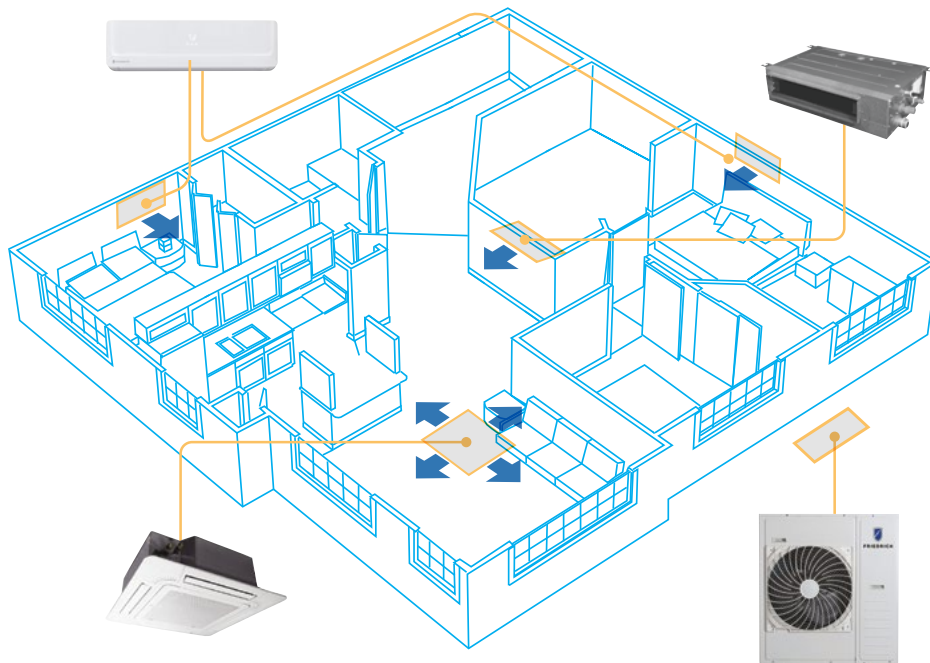
Friedrich multi zone systems utilize wall-mounted, ceiling cassette and concealed ducted models in up to 4 zones

## MULTI ZONE SYSTEMS PROVIDE TOTAL INSTALLATION FLEXIBILITY.

Zone cooling and heating provides unmatched customized comfort and energy savings

Occupants have the ability to set the temperature of each zone to their preferred comfort level\*, or turn off units in unoccupied rooms without affecting other zones.

That's the beauty and efficiency of a Friedrich Ductless Multi Zone System.



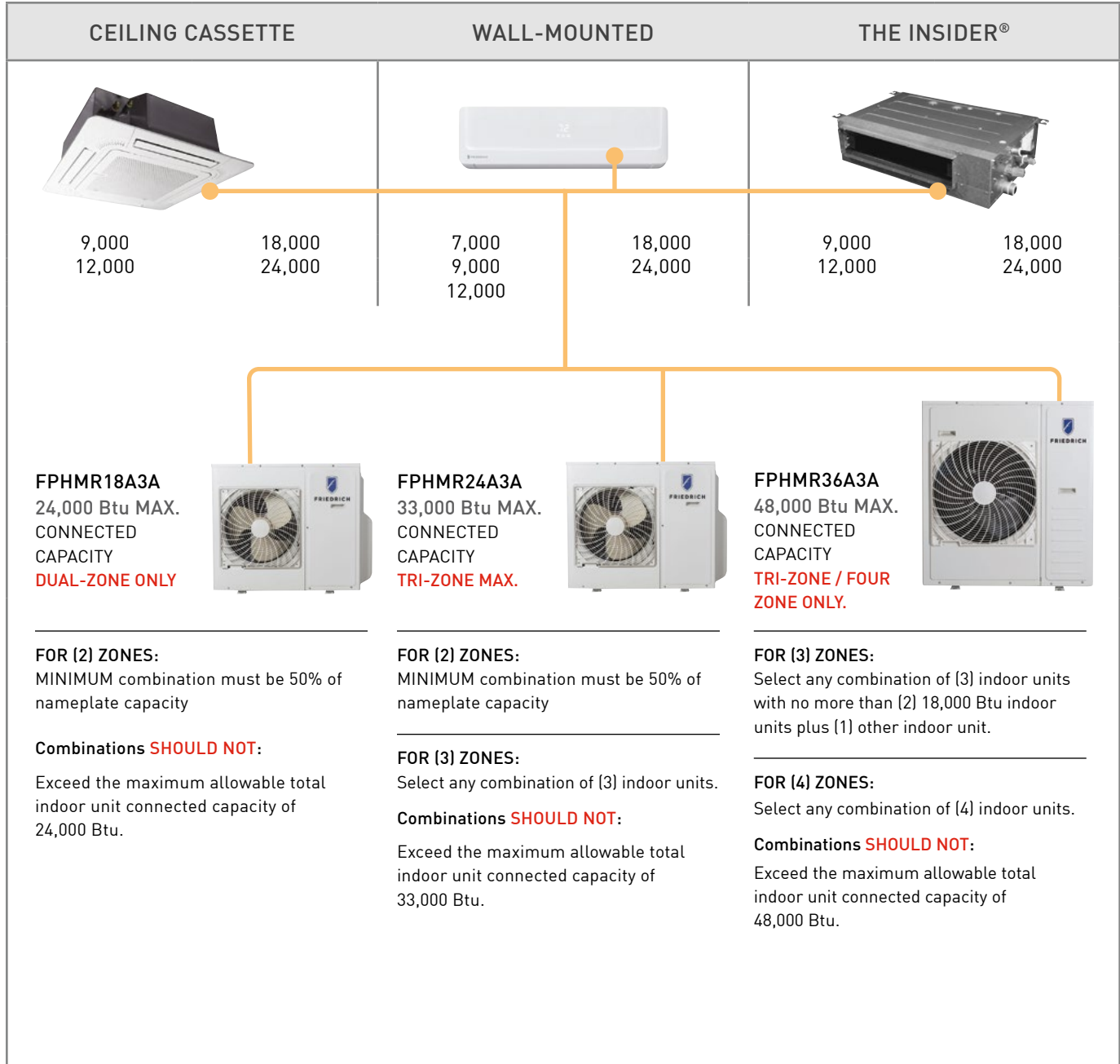
## MULTI ZONE CONFIGURATION, AHRI RATINGS

Friedrich Model	AHRI Reference Number	Indoor Type	System Capacity	EER	SEER	High Heat 47 °F	Low Heat 17°F
FPHMR18A3A	205150429	Non-ducted Indoor Units	18000	12.50	22.00	18000	12200
	205150428	Ducted Indoor Units	18000	11.50	19.00	18000	12200
	205150430	Mixed Ducted and Non-ducted Indoor Units	18000	12.00	20.50	18000	12200
FPHMR24A3A	204101246	Non-ducted Indoor Units	24000	12.50	22.00	24000	15400
	204005731	Ducted Indoor Units	24000	12.10	21.00	24000	15400
	203999079	Mixed Ducted and Non-ducted Indoor Units	24000	12.30	21.50	24000	15400
FPHMR36A3A	204101247	Non-ducted Indoor Units	32000	12.50	21.0	36000	23200
	203996910	Ducted Indoor Units	32000	12.00	19.50	36000	22600
	203999080	Mixed Ducted and Non-ducted Indoor Units	32000	12.25	20.25	36000	22600



# MULTI ZONE CONFIGURATION GUIDELINES

Select a combination of indoor units that does not exceed the maximum connected capacity, and is within the recommended parameters:

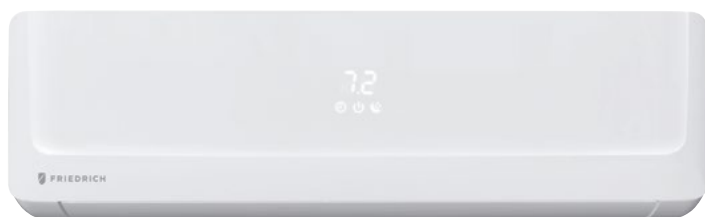


## WORKSHEET EXAMPLE

MAX. CONDENSER CAPACITY	50% OF NAMEPLATE CAPACITY	ZONE 1 Unit Btu	ZONE 2 Unit Btu	ZONE 3 Unit Btu	ZONE 4 Unit Btu
24,000	12,000			DUAL ZONE ONLY	
33,000	17,500				TRI-ZONE MAX.
48,000	24,000				

## MULTI ZONE HEAT PUMP SYSTEMS

The contractor's line with extensive features to make installation and service faster and easier. Exceptional efficiency and dependable performance.



### Wi-Fi available on select models for control anytime, anywhere

- Easy to use FriedrichGo™ app
- Control with smartphone
- Compatible with Amazon Alexa and Google Home



WIRELESS REMOTE WITH THE ABILITY TO CHANGE TO A COOL-ONLY REMOTE

### Features for comfort and convenience

- Create customizable, 7-day schedules
- Precision Inverter® technology (variable speed compressor)
- Fast Pro® design for the fastest access for maintenance of any wall-mounted ductless system
- Soft start compressor
- BLDC motor
- Auto Clean indoor coil
- Cooling/Heating/Fan/Auto mode
- Surge Cool/Heat
- Natural air flow
- Ultra quiet operation
- Sleep mode
- Auto restart
- Auto changeover
- 24-hour on/off timer
- ENERGY STAR® qualified model
- Hidden display (only visible during operation)



FPHMR18A3A , FPHMR24A3A



FPHMR36A3A

### Operates in extreme conditions

- Low ambient operation down to 14°F (Cooling mode)
- Low ambient operation down to -13°F (Heating mode)
- Low temperature compressor start-up protection



## PRO SERIES SPECIFICATIONS

PERFORMANCE RATINGS		Multi Zone Wall-Mounted - Heat Pumps				
		7k	9k	12k	18k	24k
INDOOR MODEL		FPHMW07A3A FPHMW07A3B <i>Wi-Fi</i>	FPHFW09A3A FPHFW09A3B <i>Wi-Fi</i>	FPHFW12A3A FPHFW12A3B <i>Wi-Fi</i>	FPHFW18A3A FPHFW18A3B <i>Wi-Fi</i>	FPHFW24A3A FPHFW24A3B <i>Wi-Fi</i>
SPECIFICATIONS						
CAPACITY COOLING (RATED)	Btu	7000	9000	12000	18000	24000
CAPACITY HEATING (RATED)	Btu	8500	9500	13000	19000	24200
MOISTURE REMOVAL	Pts/h	2.5	2.5	3.2	4.2	5.3
AIRFLOW	CFM	424/382/323/247	424/382/323/247	424/382/323/247	618/565/482/382	735/665/559/441
SOUND RATING (HIGH/MED/LOW)	dB-A	38/32/29	38/32/29	39/32/29	45/41/37	48/45/40
ELECTRICAL DATA						
POWER SOURCE	V-Hz-Phase	230/208~60-1	230/208~60-1	230/208~60-1	230/208~60-1	230/208~60-1
REFRIGERATION SYSTEM						
CONNECTIONS		Flare	Flare	Flare	Flare	Flare
LIQUID LINE O.D.	in	1/4	1/4	1/4	1/4	3/8
SUCTION LINE O.D.	in	3/8	3/8	3/8	1/2	5/8
DIMENSIONS & WEIGHT						
W x H x D	in	37 3/8" x 10 3/4" x 8 1/8"			48" x 12 5/8" x 9 1/4"	48" x 12 5/8" x 9 1/4"
NET WEIGHT	lbs	18.7	18.7	18.7	32	32
SHIPPING WEIGHT	lbs	24.3	24.3	24.3	37.5	37.5

PERFORMANCE RATINGS		Multi Outdoor		
		18k	24k	36k
OUTDOOR MODEL		FPHMR18A3A	FPHMR24A3A	FPHMR36A3A
SPECIFICATIONS				
POWER SOURCE		208~230/60/1	208~230/60/1	208~230/60/1
EST. YEARLY OPERATING COST	\$	\$90	\$172	\$259
RUNNING CURRENT COOLING RATED	A	6.5	8.7	11
RUNNING CURRENT HEATING RATED	A	7.3	8.7	13
POWER INPUT COOLING MIN. - RATED - MAX.	W	1440 [510~2610]	1920 [420~2640]	2520 [700~5000]
POWER INPUT HEATING MIN. - RATED - MAX.	W	1530 [450~3510]	1920 [420~4020]	3060 [600~6000]
POWER AND COMMUNICATION CABLE	No. x AWG	4 x 14AWG	4 x 14AWG	4 x 14AWG
DIMENSIONS W x H x D	in	33 7/8 x 26 3/8 x 12 1/4	37 3/8 x 33 x 13 3/8	37 3/8 x 41 3/8 x 13 3/8
NET WEIGHT	lbs	108	159	186
SHIPPING WEIGHT	lbs	119	170	216
REFRIGERATION SYSTEM				
REFRIGERANT		R410A	R410A	R410A
FACTORY PRECHARGE	oz	63	81.13	105.82
FACTORY PRECHARGE	ft	49	74	98
LIQUID LINE O.D.	in	1/4	1/4	1/4
SUCTION LINE O.D.	in	3/8	3/8	3/8
MIN./MAX. LINE LENGTH (EACH)	ft	82	66	66
MIN./MAX. LINE LENGTH (TOTAL)	ft	164	197	197
MAX. HEIGHT DIFFERENCE	ft	49	49	49
SOUND PRESSURE LEVEL COOLING	A	55	59	59
SOUND PRESSURE LEVEL HEATING	A	55	59	59
OPERATING RANGE COOLING	°F DB	14~115	14~115	14~115
OPERATING RANGE HEATING	°F WB	-13~75	-13~75	-13~75
MINIMUM AMPACITY	A	30A	30A	30A
MAX. TD FUSE/BREAKER	A	45A	45A	45A

Your operating costs will depend on your utility rates and use. The estimated operating cost is based on a electricity cost of \$ .12 per kWh. For more information, visit [www.ftc.gov/energy](http://www.ftc.gov/energy).

Due to continuing research in new energy-saving technology, specifications are subject to change without notice.



## MULTI ZONE • CEILING CASSETTE HEAT PUMPS

Compact cassette units install in a drop ceiling and mount flush to the ceiling for a clean look and efficient installation.



### Wi-Fi available on select models for control anytime, anywhere

- Easy to use FriedrichGo™ app
- Control with smartphone
- Compatible with Amazon Alexa and Google Home

### Features for comfort and convenience

- Create customizable, 7-day schedules
- 24-hour on/off timer
- Precision Inverter® technology (variable speed compressor)
- Soft start compressor
- Natural air flow
- 4-way cooling
- Surge Cool/Heat
- Cooling/Heating/Fan mode
- Dry mode
- Sleep mode
- Independent vane control
- 3 fan speeds
- Ultra-quiet turbo fan
- Evaporator frost control
- Auto restart
- Auto changeover
- DiamonBlue Advanced Corrosion Protection®
- Clean, modern look
- Flexible installation
- ENERGY STAR® qualified models
- Precise air distribution

### Operates in extreme conditions

- Built-in low ambient standard, down to 14°F (Cooling mode)
- Low ambient operation down to -13°F (Heating mode)
- Low temperature compressor start-up protection

**NOTE:** Cassette grilles are sold separately.



FPHMR18A3A , FPHMR24A3A



FPHMR36A3A



## PRO SERIES SPECIFICATIONS

PERFORMANCE RATINGS		Multi Zone Cassette - Heat Pumps			
		9k	12k	18k	24k
INDOOR MODEL		FPHFC09A3A FPHFC09A3B <i>Wi-Fi</i>	FPHFC12A3A FPHFC12A3B <i>Wi-Fi</i>	FPHFC18A3A FPHFC18A3B <i>Wi-Fi</i>	FPHFC24A3A FPHFC24A3B <i>Wi-Fi</i>
SPECIFICATIONS					
CAPACITY COOLING (RATED)	Btu	9000	12000	18000	24000
CAPACITY HEATING (RATED)	Btu	10200	13500	20400	27000
MOISTURE REMOVAL	Pts/h	1.9	2.5	3.2	5.0
AIRFLOW (HIGH)	CFM	306	471	559	1100
SOUND RATING (MAX.-MIN.)	dB-A	40/28	40/28	40/28	40/28
ELECTRICAL DATA					
POWER SOURCE	V-Hz-Phase	230/208-60-1	230/208-60-1	230/208-60-1	230/208-60-1
POWER AND COMMUNICATION CABLE	No. x AWG	4 x 14AWG	4 x 14AWG	4 x 14AWG	4 x 14AWG
REFRIGERATION SYSTEM					
CONNECTIONS		Flare	Flare	Flare	Flare
LIQUID LINE O.D.	in	1/4	1/4	1/4	3/8
SUCTION LINE O.D.	in	3/8	3/8	1/2	5/8
DIMENSIONS & WEIGHT					
W X H X D	in	22 1/2 x 8 1/2 x 22		33 x 9 3/4 x 33	
NET WEIGHT	lbs	31.9	34	61.8	59.5
SHIPPING WEIGHT	lbs	38.5	40.7	81.6	79.5
PACKAGE DIMENSIONS W X H X D	in	28 3/4 x 11 1/2 x 26		39 1/4 x 37 x 14	

PERFORMANCE RATINGS		Multi Outdoor		
		18k	24k	36k
OUTDOOR MODEL		FPHMR18A3A	FPHMR24A3A	FPHMR36A3A
SPECIFICATIONS				
POWER SOURCE		208-230/60/1	208-230/60/1	208-230/60/1
EST. YEARLY OPERATING COST	\$	\$90	\$172	\$259
RUNNING CURRENT COOLING RATED	A	6.5	8.7	11
RUNNING CURRENT HEATING RATED	A	7.3	8.7	13
POWER INPUT COOLING MIN. - RATED - MAX.	W	1440 [510-2610]	1920 [420-2640]	2520 [700-5000]
POWER INPUT HEATING MIN. - RATED - MAX.	W	1530 [450-3510]	1920 [420-4020]	3060 [600-6000]
POWER AND COMMUNICATION CABLE	No. x AWG	4 x 14AWG	4 x 14AWG	4 x 14AWG
DIMENSIONS W x H x D	in	33 7/8 x 26 3/8 x 12 1/4	37 3/8 x 33 x 13 3/8	37 3/8 x 41 3/8 x 13 3/8
NET WEIGHT	lbs	108	159	186
SHIPPING WEIGHT	lbs	119	170	216
REFRIGERATION SYSTEM				
REFRIGERANT		R410A	R410A	R410A
FACTORY PRECHARGE	oz	63	81.13	105.82
FACTORY PRECHARGE	ft	49	74	98
LIQUID LINE O.D.	in	1/4	1/4	1/4
SUCTION LINE O.D.	in	3/8	3/8	3/8
MIN./MAX. LINE LENGTH (EACH)	ft	82	66	66
MIN./MAX. LINE LENGTH (TOTAL)	ft	164	197	197
MAX. HEIGHT DIFFERENCE	ft	49	49	49
SOUND PRESSURE LEVEL COOLING	A	55	59	59
SOUND PRESSURE LEVEL HEATING	A	55	59	59
OPERATING RANGE COOLING	°F DB	14-115	14-115	14-115
OPERATING RANGE HEATING	°F WB	-13-75	-13-75	-13-75
MINIMUM AMPACITY	A	30A	30A	30A
MAX. TD FUSE/BREAKER	A	45A	45A	45A

Your operating costs will depend on your utility rates and use. The estimated operating cost is based on a electricity cost of \$ .12 per kWh. For more information, visit [www.ftc.gov/energy](http://www.ftc.gov/energy).

Models require grille. Sold separately.

Due to continuing research in new energy-saving technology, specifications are subject to change without notice.





## MULTI ZONE • THE INSIDER® CONCEALED DUCTED HEAT PUMPS

Indoor unit installs in the ceiling or furr down for unobtrusive installation. Conditioned or non-conditioned air can be added to ducting to allow fresh air into the conditioned space whenever required.



### Features

- Precision Inverter® technology (variable speed compressor)
- Soft start compressor
- BLDC motor
- Cooling/Heating/Fan mode
- Dry mode
- 3 fan speeds
- Auto restart
- Auto changeover
- DiamonBlue Advanced Corrosion Protection®
- Control lock function on controller
- External Static Pressure Range (ESP)
  - 9K/12K/18K (0 – .40) WC
  - 24K (0 – .40) WC

### Operates in extreme conditions

- Built-in low ambient standard, down to 14°F (Cooling mode)
- Low ambient operation down to -13°F (Heating mode)
- Low temperature compressor start-up protection



FPHMR18A3A , FPHMR24A3A



FPHMR36A3A

## PRO SERIES SPECIFICATIONS

PERFORMANCE RATINGS		Multi Zone - The Insider™ Concealed Ducted Heat Pumps			
		9k	12k	18k	24k
INDOOR MODEL		FPHFD09A3A	FPHFD12A3A	FPHFD18A3A	FPHFD24A3A
SPECIFICATIONS					
CAPACITY COOLING (RATED)	Btu	9000	12000	18000	24000
CAPACITY HEATING (RATED)	Btu	10000	12500	19000	24000
MOISTURE REMOVAL	Pts/h	1.9	3.2	3.2	5.1
AIRFLOW	CFM	235/285/309	235/285/338	370/440/529	501/574/647
SOUND RATING (MAX.-MIN.)	dB-A	29/27/26	36/33/30	38/35/33	38/36/34
ELECTRICAL DATA					
POWER SOURCE	V-Hz-Phase	230/208-60-1	230/208-60-1	230/208-60-1	230/208-60-1
POWER AND COMMUNICATION CABLE	No. x AWG	4 x 14AWG	4 x 14AWG	4 x 14AWG	4 x 14AWG
REFRIGERATION SYSTEM					
CONNECTIONS		Flare	Flare	Flare	Flare
LIQUID LINE O.D.	in	1/4	1/4	1/4	3/8
SUCTION LINE O.D.	in	3/8	3/8	1/2	5/8
DIMENSIONS & WEIGHT					
W X H X D	in	35 7/8 x 7 1/2 x 17 5/8		48 7/16 x 7 1/2 x 17 5/8	55 7/8 x 10 5/8 x 31 1/2
NET WEIGHT	lbs	45.2	45.2	66.2	70.5
SHIPPING WEIGHT	lbs	51.8	51.8	77.2	81.6

PERFORMANCE RATINGS		Multi Outdoor		
		18k	24k	36k
OUTDOOR MODEL		FPHMR18A3A	FPHMR24A3A	FPHMR36A3A
SPECIFICATIONS				
POWER SOURCE		208-230/60/1	208-230/60/1	208-230/60/1
EST. YEARLY OPERATING COST	\$	\$90	\$172	\$259
RUNNING CURRENT COOLING RATED	A	6.5	8.7	11
RUNNING CURRENT HEATING RATED	A	7.3	8.7	13
POWER INPUT COOLING MIN. - RATED - MAX.	W	1440 [510-2610]	1920 [420-2640]	2520 [700-5000]
POWER INPUT HEATING MIN. - RATED - MAX.	W	1530 [450-3510]	1920 [420-4020]	3060 [600-6000]
POWER AND COMMUNICATION CABLE	No. x AWG	4 x 14AWG	4 x 14AWG	4 x 14AWG
DIMENSIONS W x H x D	in	33 7/8 x 26 3/8 x 12 1/4	37 3/8 x 33 x 13 3/8	37 3/8 x 41 3/8 x 13 3/8
NET WEIGHT	lbs	108	159	186
SHIPPING WEIGHT	lbs	119	170	216
REFRIGERATION SYSTEM				
REFRIGERANT		R410A	R410A	R410A
FACTORY PRECHARGE	oz	63	81.13	105.82
FACTORY PRECHARGE	ft	49	74	98
LIQUID LINE O.D.	in	1/4	1/4	1/4
SUCTION LINE O.D.	in	3/8	3/8	3/8
MIN./MAX. LINE LENGTH (EACH)	ft	82	66	66
MIN./MAX. LINE LENGTH (TOTAL)	ft	164	197	197
MAX. HEIGHT DIFFERENCE	ft	49	49	49
SOUND PRESSURE LEVEL COOLING	A	55	59	59
SOUND PRESSURE LEVEL HEATING	A	55	59	59
OPERATING RANGE COOLING	°F DB	14-115	14-115	14-115
OPERATING RANGE HEATING	°F WB	-13-75	-13-75	-13-75
MINIMUM AMPACITY	A	30A	30A	30A
MAX. TD FUSE/BREAKER	A	45A	45A	45A

Your operating costs will depend on your utility rates and use. The estimated operating cost is based on a electricity cost of \$.12 per kWh. For more information, visit [www.ftc.gov/energy](http://www.ftc.gov/energy).

Due to continuing research in new energy-saving technology, specifications are subject to change without notice.



## SINGLE ZONE • WALL-MOUNTED HEAT PUMPS

Excellent efficiency and outstanding quality make Select a truly exceptional value line



**115 VOLT MODELS**  
FSHSW09A1A, FSHSW12A1A



**230/208 VOLT MODELS**

FSHSW18A3A, FSHSW24A3A



FSHSW36A3A



WIRELESS  
REMOTE CONTROL

### Features

- Inverter technology is more energy efficient and can self-adjust capacity to match cooling needs
- Multiple operating modes including: auto, cool, dry, fan only and heat
- TURBO mode operates the unit at maximum performance to quickly bring the room to set temperature
- 4 fan speeds heating or cooling: high, medium, low, "quiet", plus auto-fan
- Continuous 'Air Sweep' up & down
- LCD remote
- 24-hour timer and sleep timer
- Indoor unit will briefly display set or room temperature
- Auto-restart after power interruptions
- Auto-shut flaps close when unit is off for a sleek appearance
- Washable antimicrobial air filters
- 115V/230V models will provide cooling in outdoor temperatures down to 0°F



### OPTIONAL ACCESSORY FOR FLOATING AIR® SELECT MODELS

#### DFACC

LCD remote for cooling only operation of all Floating Air Select heat pump models.



## SELECT SERIES SPECIFICATIONS

PERFORMANCE RATINGS		115 volt models		230/208 volt models		
SYSTEM MODEL NO.		FSHW091	FSHW121	FSHW183	FSHW243	FSHW363
INDOOR MODEL		FSHSW09A1A	FSHSW12A1A	FSHSW18A3A	FSHSW24A3A	FSHSW36A3A
OUTDOOR MODEL		FSHSR09A1A	FSHSR12A1A	FSHSR18A3A	FSHSR24A3A	FSHSR36A3A
SPECIFICATIONS						
CAPACITY COOLING (RATED)	Btu	9000	12000	18000	24000	36000
CAPACITY COOLING MIN - MAX	Btu	3753-9724	3753-12500	3412-20472	8600-24000	7404-35997
CAPACITY HEATING (RATED) @ 47°F	Btu	9500	13000	19800	24000	34600
CAPACITY HEATING (RATED) @ 17°F	Btu	6800	7100	12800	14600	20200
CAPACITY HEATING MIN - MAX	Btu	2081-12283	3412-05013	3412-21837	8600-26000	14979-35997
SENSIBLE HEAT RATIO		0.79	0.73	0.77	0.77	0.75
HSPF		9.0	9.0	9.0	10.0	9.0
SEER		18.0	18.0	18.0	18.0	18.0
EER		10.0	10.1	9.89	11.0	8.2
MOISTURE REMOVAL	Pts/h	1.69	2.96	3.8	4.23	7.4
AIRFLOW (HIGH/MED/LOW/QUIET)	CFM	318/288/241/171	400/318/241/194	500/441/383/294	588/441/306/206	883/765/647/559
SOUND RATING - INDOOR (HIGH/MED/LOW/QUIET)	dB-A	43/38/34/28	43/39/35/29	47/44/41/35	49/46/42/36	54/49/44/37
SOUND RATING - OUTDOOR	dB-A	52	53	57	58	65
OPERATING RANGE (HEATING)	°F	-4-75	-4-75	-13-75	-13-75	-4-75
OPERATING RANGE (COOLING)	°F	0-115	0-115	0-115	0-115	0-115
EST. YEARLY OPERATING COST	U.S. \$	\$67	\$113	\$146	\$198	\$368
ELECTRICAL DATA						
POWER SOURCE	V-Hz-Phase	115-60-1	115-60-1	230/208-60-1	230/208-60-1	230/208-60-1
MIN. AMPACITY	A	17	20	16	16	24
COOLING WATTS	W	900	194	1820	2010	4100
COOLING AMPS	A	10.87	13.0	8.1	17.0	10.87
HEATING WATTS	W	870	1250	2090	2130	3800
HEATING AMPS	A	10.36	13.5	8.5	9.45	16.5
MAX. TD FUSE/BREAKER	A	25	30	25	25	40
REFRIGERATION SYSTEM						
REFRIGERANT		R410A	R410A	R410A	R410A	R410A
COMPRESSOR TYPE		Inverter	Inverter	Inverter	Inverter	Inverter
CONNECTIONS		Flare	Flare	Flare	Flare	Flare
LIQUID LINE O.D.	in	1/4"	1/4"	1/4"	1/4"	1/4"
SUCTION LINE O.D.	in	3/8"	3/8"	1/2"	5/8"	5/8"
REFRIGERANT CHARGE	oz.	24.7	31.8	45.68	56.4	91.71
FACTORY PRECHARGE	ft	25	25	25	25	25
MIN. / MAX. LINE LENGTH	ft	7/66	7/98	10/82	10/82	15/98
MAX. HEIGHT DIFFERENCE	ft	32.8	49.2	65.0	65.6	32.8
DIMENSIONS & WEIGHT						
INDOOR UNIT						
W x H x D	in	31 1/8 x 10 7/8 x 8	31 1/8 x 11 3/8 x 8	33 1/4 x 11 7/8 x 9	42 1/2 x 12 7/8 x 10	53 1/8 x 12 7/8 x 10
NET WEIGHT	lbs	20.9	23.2	30.9	37.5	42.0
SHIPPING WEIGHT	lbs	25.4	27.6	37.5	45.2	51.8
OUTDOOR UNIT						
W x H x D	in	33 1/2 x 21 1/4 x 12 5/8		37 5/8 x 27 5/8 x 15 5/8		38 5/8 x 31 1/8 x 16 7/8
NET WEIGHT	lbs	62.8	67.3	97.0	103.6	161
SHIPPING WEIGHT	lbs	68.4	72.8	106.9	113.5	171.9
TOTAL NET WEIGHT	lbs	83.7	90.5	127.9	141.1	203
TOTAL SHIPPING WEIGHT	lbs	93.8	100.4	144.4	158.7	223.7

Due to continuing research in new energy-saving technology, specifications are subject to change without notice.



## ACCESSORIES

### REFRIGERATION LINE SETS (REQUIRED) OUTSIDE DIMENSIONS

Floating Air® Pro Wall-mounted				
SYSTEM MODEL	Liquid	Suction	15' Lineset Kit	35' Lineset Kit
FPHW091 / FPHW091A	1/4	3/8	T32150	T32350
FPHW121 / FPHW121A	1/4	3/8	T32150	T32350
FPHW093 / FPHW093A	1/4	3/8	T32150	T32350
FPHW123 / FPHW123A	1/4	3/8	T32150	T32350
FPHW183 / FPHW183A	1/4	1/2	T42150	T42350
FPHW243 / FPHW243A	3/8	5/8	T53150	T53350
FPHW363 / FPHW363A	3/8	3/4	T63150	T63350
Floating Air® Pro Multizone Outdoor				
FPHMR18A3A	1/4	3/8	T32150	T32350
FPHMR24A3A	1/4	3/8	T32150	T32350
FPHMR36A3A	1/4	3/8	T32150	T32350
Floating Air® Premier Wall-mounted				
FRHW093 / FRHW093A	1/4	3/8	T32150	T32350
FRHW123 / FRHW123A	1/4	3/8	T32150	T32350
Floating Air® Select Wall-mounted				
FSHW091	1/4	3/8	T32150	T32350
FSHW121	1/4	3/8	T32150	T32350
FSHW183	1/4	1/2	T42150	T42350
FSHW243	1/4	5/8	T52150	T52350
FSHW363	1/4	5/8	T52150	T52350
Floating Air® Pro Cassette Single Zone				
FPHC093 / FPHC093A	1/4	3/8	T32150	T32350
FPHC123 / FPHC123A	1/4	3/8	T32150	T32350
FPHC183 / FPHC183A	1/4	1/2	T42150	T42350
FPHC243 / FPHC243A	3/8	5/8	T53150	T53350
FPHC363A	3/8	3/4	T63150	T63350
Floating Air® Pro The Insider® Single Zone Concealed Ducted				
FPHD093	1/4	3/8	T32150	T32350
FPHD123	1/4	3/8	T32150	T32350
FPHD183	1/4	1/2	T42150	T42350
FPHD243	3/8	5/8	T53150	T53350
FPHD363	3/8	3/4	T63150	T63350

### REFRIGERATION LINE SETS MIN./MAX. LENGTHS

Floating Air® Pro Wall-mounted		
SYSTEM MODEL	Min. (ft.)	Max. Each/Total (ft.)
FPHW091 / FPHW091A	10	50
FPHW121 / FPHW121A	10	50
FPHW093 / FPHW093A	10	50
FPHW123 / FPHW123A	10	50
FPHW183 / FPHW183A	10	66
FPHW243 / FPHW243A	10	66
FPHW363 / FPHW363A	10	66
Floating Air® Pro Ceiling Cassette		
FPHC093 / FPHC093A	25	82
FPHC123 / FPHC123A	25	82
FPHC183 / FPHC183A	25	82
FPHC243 / FPHC243A	25	164
FPHC363A	25	164
Floating Air® Pro The Insider® Concealed Ducted		
FPHD093	25	82
FPHD123	25	82
FPHD183	25	82
FPHD243	25	164
FPHD363	25	164
Floating Air® Pro Outdoor		
FPHMR18A3A	25	82/164
FPHMR24A3A	25	66/197
FPHMR36A3A	25	66/246
Floating Air® Premier		
FRHW093 / FRHW093A	10	66
FRHW123 / FRHW123A	10	66
Floating Air® Select		
FSHW091	10	66
FSHW121	10	66
FSHW183	10	82
FSHW243	10	82
FSHW363	15	98

### CEILING CASSETTE GRILLES (REQUIRED)

Decorative Grille	
FPCG0912	FPCG182436
Fits FPHFC09A3A (B) FPHFC12A3A (B)	Fits FPHFC18A3A (B) FPHFC24A3A (B) FPHFC36A3B

### WALL CONTROLLERS (OPTIONAL)



FPWC1



FSWC1

**FPWC1** Optional wired wall controller for Floating Air® Pro and Premier, single and multizone models.

**FSWC1** Optional wired wall controller for Floating Air® Select single zone models.

### TORQUE WRENCH SETTINGS

Outside Diameter		Torque	
mm	inch	ft.-lbs.	N-m
6.35	1/4	13 – 18	17.6 – 24.5
9.52	3/8	25 – 30	33.3 – 41.2
12.7	1/2	40 – 47	53.9 – 64.7
15.88	5/8	45 – 59	61.7 – 80.4

### Many Friedrich ductless models qualify for rebates

Many utility companies offer rebates on ductless air conditioners. Contact your local energy provider for information on ductless rebates or visit: <http://www.dsireusa.org>

Find a factory trained Friedrich ductless installer at [www.friedrich.com](http://www.friedrich.com)



Friedrich Air Conditioning Co. | 10001 Reunion Place, Suite 500 | San Antonio, TX 78216 | 877.599.5665 | [www.friedrich.com](http://www.friedrich.com)